



CREATING COMMUNITY RESILIENCE

OUR PURPOSE

CCR provides regional leadership to create resilient communities by preventing and mitigating Adverse Childhood Experiences / Adverse Community Environments (ACEs) and building Douglas County's communities trauma-informed (TI) capacities.

WHO WE ARE

A Douglas County ACEs, Trauma, and Resilience Network (ATR) of community members, organizations, agencies, and institutions including:

- Adapt Integrated Health
- Aviva Health
- Cow Creek Tribe Health and Wellness
- Douglas CARES (Child Abuse Response & Evaluation Services)
- Douglas County Juvenile Department
- Douglas Educational Service District
- Family Development Center
- Peace at Home Advocacy Center
- Phoenix School of Roseburg
- Roseburg Public Schools
- Umpqua Community College
- Community Representative



WHAT WE ENVISION

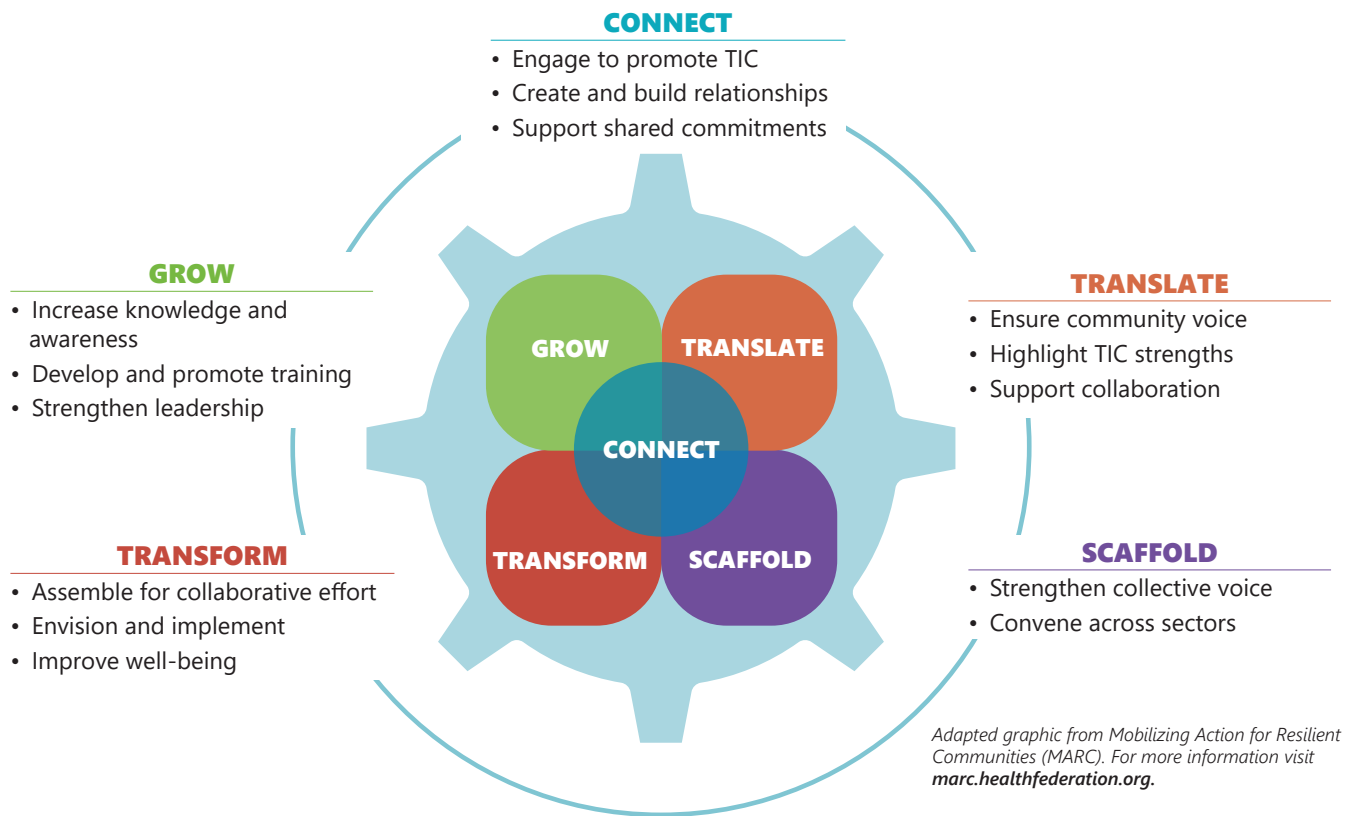
All Douglas County residents, organizations, and institutions are empowered ACE aware, trauma informed leaders promoting safe children, strong families, healthy neighborhoods, and resilient communities.

WHAT OUR SUCCESS WILL LOOK LIKE



Douglas County is in the top 10% of Oregon County Health Rankings by the year 2040.

CCR, AS AN ACES, TRAUMA, AND RESILIENCE NETWORK, OPERATES USING A FRAMEWORK TO:



We hold ourselves accountable to the principles of collective impact and to one another. We recognize that sustainable power is only achievable through equity and a strong membership structure that does not rely on the presence of any one person or agency around the table.

CONNECT

- Engage in local, regional, statewide, and national efforts to promote trauma informed care.
- Create regular opportunities to build relationships and strengthen partnerships across sectors.
- Support inclusive engagement with a shared commitment to a healthy and safe community.

GROW

- Increase knowledge and awareness through CCR activities.
- Develop and promote robust training and education opportunities, available to all.
- Strengthen leadership and engagement for all participating members.

TRANSLATE

- Ensure community voices at all levels of CCR decision-making processes.
- Highlight organization strengths and unique approaches to TIC.
- Support collaboration between community partners.

SCAFFOLD

- Strengthen a collective voice to advocate for needs of Douglas County communities.
- Facilitate and convene regular opportunities for engagement across sectors.

TRANSFORM

- Assemble likely and unlikely partners for collaborative efforts rooted in NEAR sciences.
- Envision and implement creative solutions.
- Improve health and well-being of all community members in Douglas County.